

MOBILITY

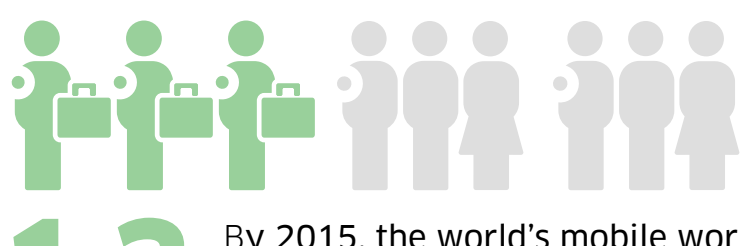
EXPECT CONNECTIVITY ANYWHERE, ANYTIME



Welcome to a new age of continuous connectivity where multiple devices make 'always on, always available' mobility more than just a trend, but a critical part of the corporate DNA.



CONNECTIVITY ANYWHERE



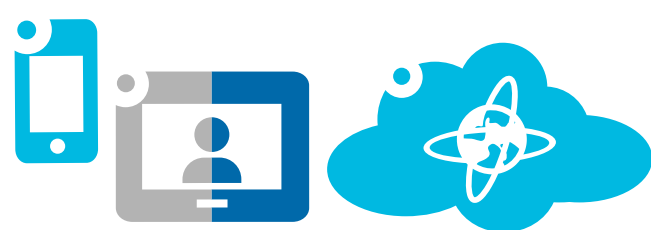
1.3 By 2015, the world's mobile worker population will reach **1.3 billion** - **37.2% of the total workforce**¹



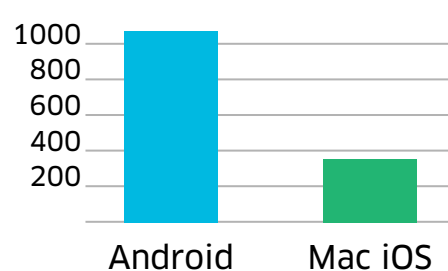
71% of IT decision makers have the mobility support for employees as their top priority project for the next 12 months²

WITH ANY WIRED OR WIRELESS DEVICE

49% of employees believe mobile devices will become their primary work computing devices in the next 5 years³



Projected worldwide mobile device shipments by operating systems in 2014, in millions of units⁴



QUALITY ACCESS TO APPLICATIONS

73% of those using collaborative mobile technology are more likely to report improved sales and customer acquisition than their counterparts who don't⁵



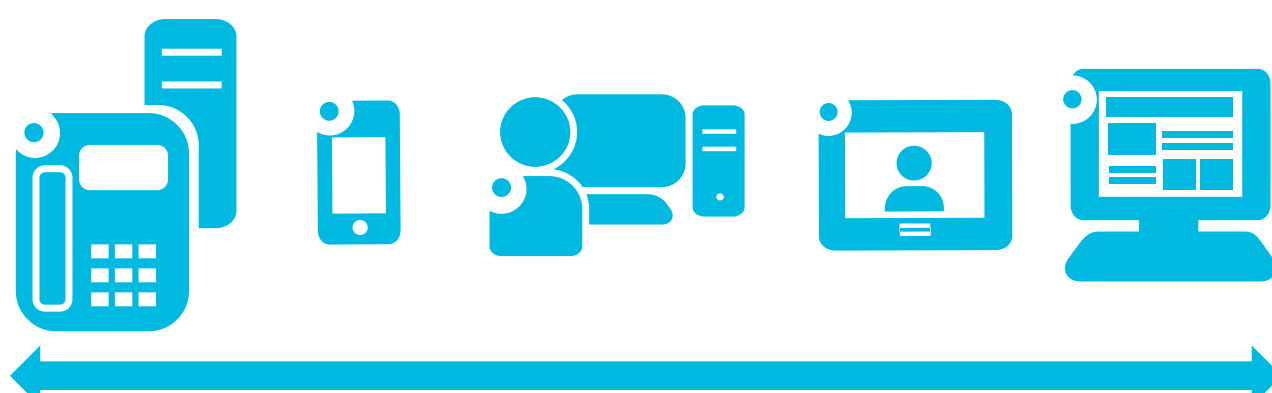
52% of organizations get several complaints a day from employee having trouble connecting to corporate WLAN with a mobile device⁶



UC&C TECHNOLOGY ENABLES EFFICIENT COLLABORATION AND INCREASES PRODUCTIVITY.

A company with 100 Employees can save: **115 minutes /day/employee** or \$920,000 annual cost savings⁷

ALL WITH A CONSISTENT EXPERIENCE



WHAT SHOULD YOU CONSIDER WHEN PLANNING YOUR NEXT NETWORK EVOLUTION?

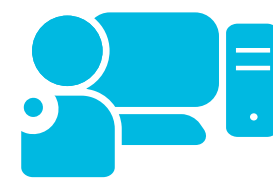
SECURITY

63% will invest in Mobile & Enterprise Security in the next 12 months⁸



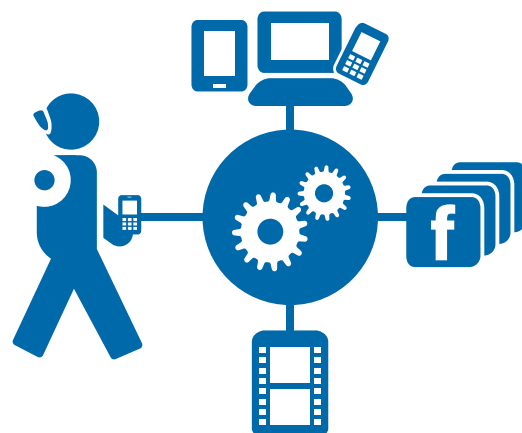
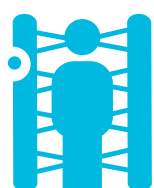
FIXED LAN WON'T GO AWAY SOON

77% of enterprise PC utilization won't change (or slightly diminish) as employees adopt wireless tablets and smartphones⁹



INTELLIGENCE

Networks can't remain static. To support mobility they must automatically detect the user and the device and application being used and respond accordingly.



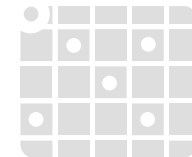
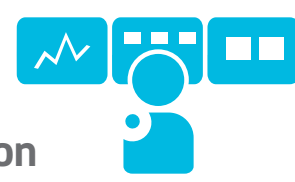
#1 lesson learned from successful mobile strategy implementations: Adopt an **integrated wired and wireless solution that can grow** with your current and future platform.



TAKE THE RIGHT APPROACH

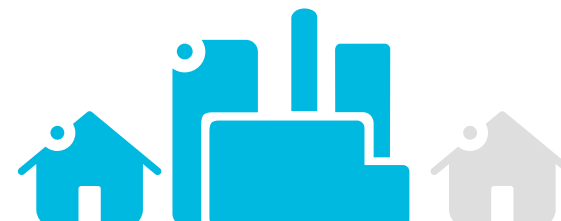
1 PLAN & DESIGN

- Understand your business priorities
- Know your network for a right-sized solution
- Assess your network capabilities today, plan for future needs



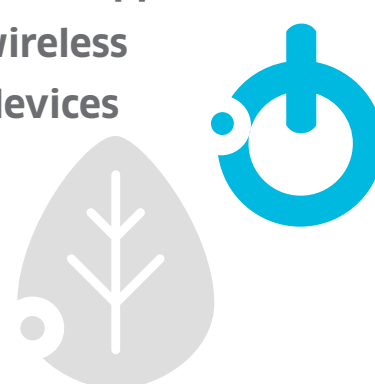
2 BUILD & EVOLVE

- Pervasive wireless coverage
- Right-sized LAN Core
- Optimized LAN access
- Evolve to unified access and management



3 BENEFIT & GROW

- Seamless, high-quality experience on wired and wireless applications
- User chooses device: corporate, personal, wired or wireless
- Automatic configuration of personal and corporate devices (Off-loads IT and secure assets)
- Self-service guest registration: Secures network and offloads IT



IS YOUR NETWORK BUILT FOR THE MOBILE ENTERPRISE?

GET YOUR COMPLEMENTARY NETWORK ASSESSMENT >

Alcatel-Lucent Enterprise



Sources:
 1 IDC Worldwide Mobile Worker Population 2011-2015 Forecast (Doc #232073)
 2 Forrester Forrester's networks and telecommunication survey Q1, 2013
 3 Samsung Mobile Index http://www.samsung.com/us/news/20351
 4 IDC Worldwide Quarterly Mobile Phone Tracker, 2014
 5 Survey by Fluke Networks
 6 The New Digital Economy - Oxford Economics
 7 Alcatel-Lucent Primary Research
 8 2013 Enterprise Mobility Exchange Survey
 9 Forrester Forrester's mobility survey Q2, 2013